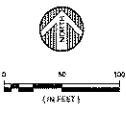
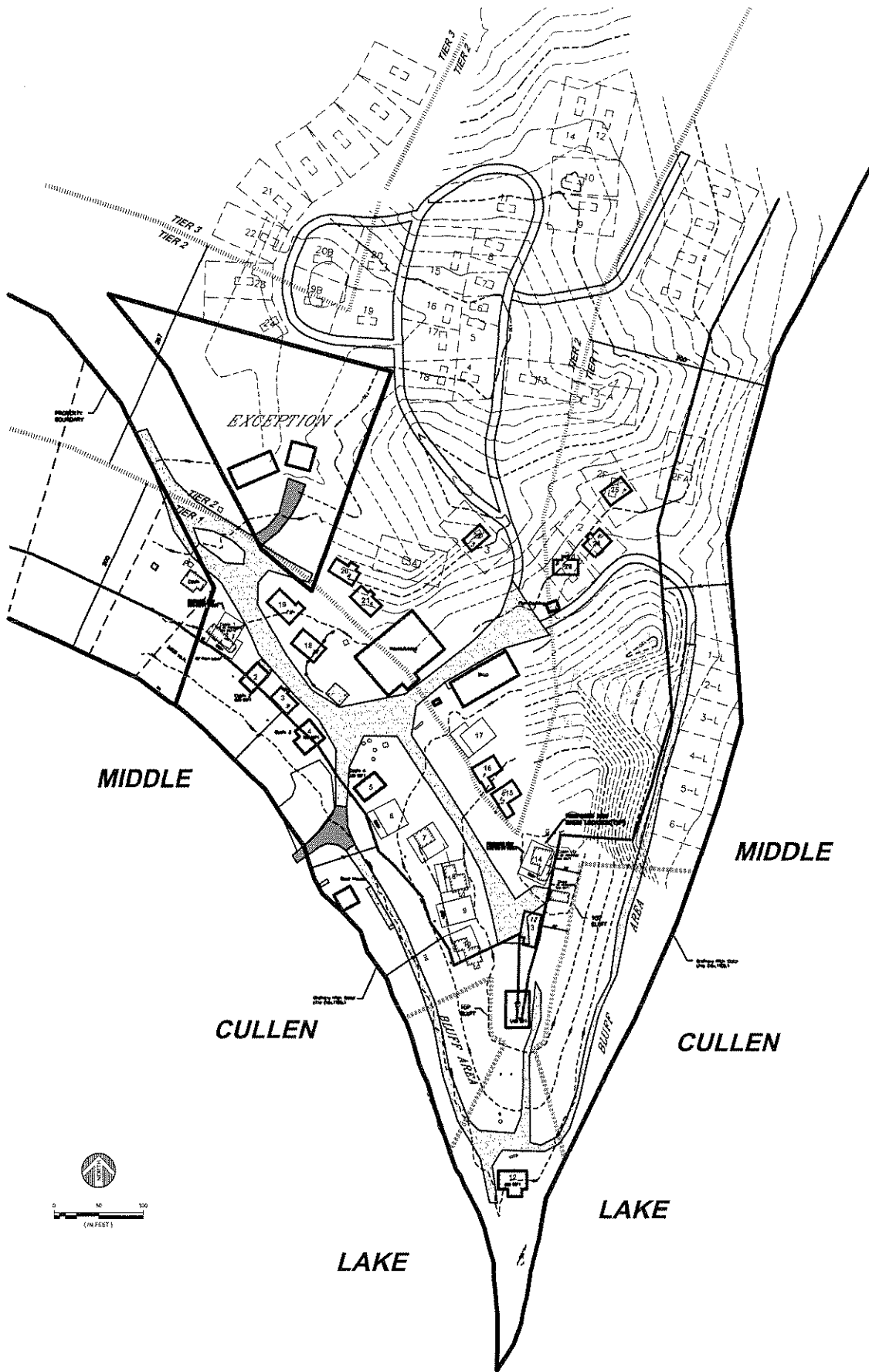
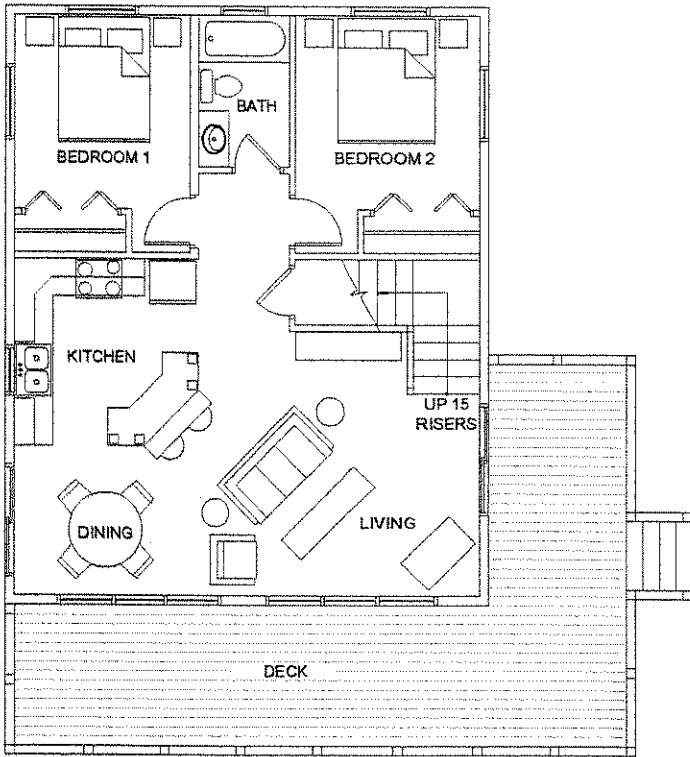


-- PROPOSED CHANGES TO --  
**WILDERNESS RESORT**

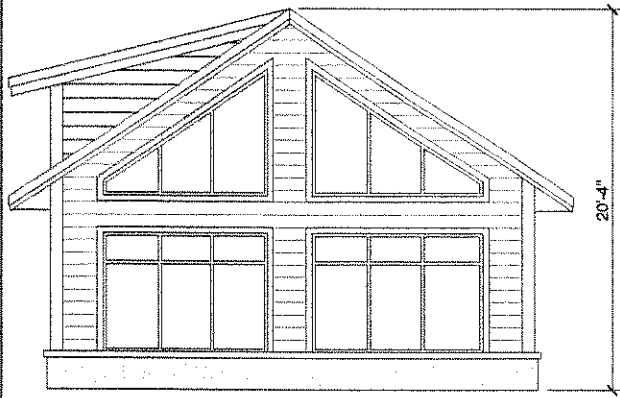


© 2004 WILDERNESS SMITH NOTLING  
 ENGINEERS ARCHITECTS  
 LAND SURVEYORS ENVIRONMENTAL SERVICES  
 WILDERNESS SMITH NOTLING

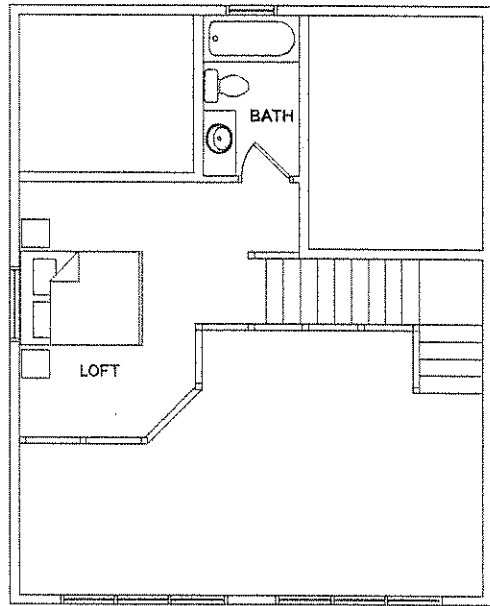
NOVEMBER 12, 2004



**1 1ST FLOOR PLAN**  
1/8" = 1'-0" 632 SF.



**2 LAKESIDE ELEVATION**  
1/8" = 1'-0"



**3 LOFT PLAN**  
1/8" = 1'-0" 213 SF.

© 2004 WILDENRTH SMITH HOLDINGS

	WILDERNESS REAL ESTATE ARCHITECTS LAND SERVICES ENVIRONMENTAL SERVICES	WILDERNESS REAL ESTATE ARCHITECTS LAND SERVICES ENVIRONMENTAL SERVICES	DATE: _____ REV: _____ REVISIONS: _____ BY: _____	DATE: SEPTEMBER 24, 2004 PLACE: TOWN COUNTY: FULTON JOB NUMBER: 2830274	WILDERNESS RESORT TOM STEFFENS PEQUOT LAKES AREA PRELIMINARY PLANS	SHEET NO. <b>A2</b> DATE: 04
	WILDERNESS REAL ESTATE ARCHITECTS LAND SERVICES ENVIRONMENTAL SERVICES		DATE: _____ REV: _____ REVISIONS: _____ BY: _____	DATE: SEPTEMBER 24, 2004 PLACE: TOWN COUNTY: FULTON JOB NUMBER: 2830274	WILDERNESS RESORT TOM STEFFENS PEQUOT LAKES AREA PRELIMINARY PLANS	SHEET NO. <b>A2</b> DATE: 04